

**PRODUCT NAME:**

"GLOBAL FISHER" & GLOBAL "RINSE MAID®" Series
ADD ON SPOUT DIVERter TAP
for use with PRE RINSES

PART NUMBER:

G-506 + OTHERS (SEE CHART BELOW)

DESCRIPTION:

'GLOBAL FISHER' ADD-ON SPOUT DIVERter
TAP with 360 DEGREE SWIVEL FIXED
STEM JUMPER VALVE.

**TECHNICAL INFORMATION:**

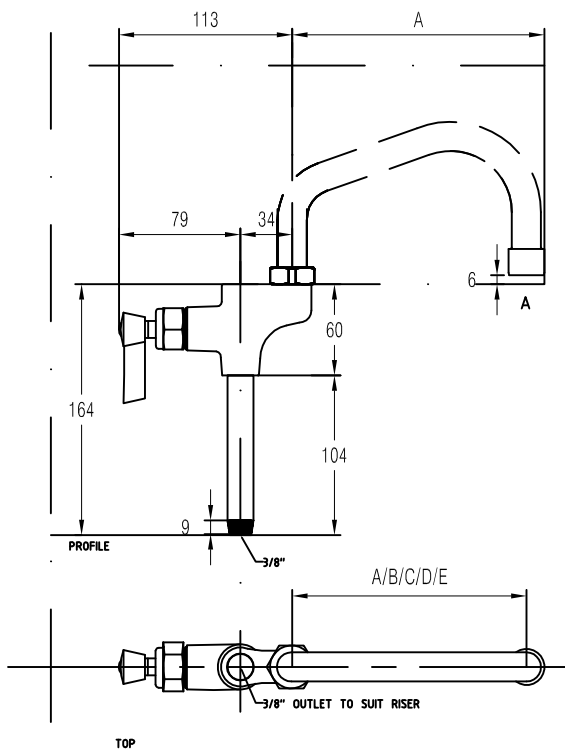
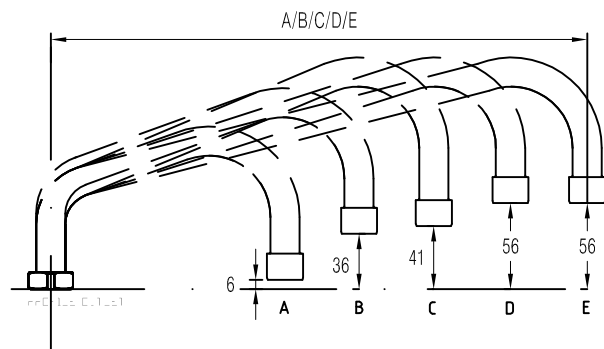
- IDEAL WORKING PRESSURE 60 - 100 PSI
- MAX. PRESSURE = 200 PSI STATIC (In short periods)
- WORKING TEMPERATURE 5 C - 65 C
- SHIPPING WEIGHT 1.0KGS (approx)
- THREADED MECHANICAL JOINTS

SUPPLIED WITH:

- CP RISER 4 1/2"
- C.P. DIVERter TAP BODY with A RANGE OF SWIVEL SPOUT
LENGTH OPTIONS
- 360 DEGREE SWIVEL FIXED STEM JUMPER VALVE

WELS:

SPOUT - 3 STAR, 9lpm



REF	LENGTH IN/MM	PT.NO.
A	6" /179mm	G-506
B	8" /227mm	G-508
C	10" /276mm	G-510
D	12" /326mm	G-512
E	14" /376mm	G-514

WATERMARK & WELS:

Global Tapware Pty Ltd is a Watermarked, level 1, Company.
All relevant products & components are WELS registered.

Special Notice:

- 1 - We reserve the right to make changes to products and drawings without notice.
- 2 - All drawings & Documents are subject to copyright ©.
- 3 - Seek written consent by us to reprint / use for other than specification work.

'GLOBAL FISHER' & GLOBAL RINSEMAID' Series

PT.NO.- G-506 + OTHER SIZES (see chart above)
PRE RINSE ADD-ON SPOUT DIVERter TAPS