

**PART NUMBER:**  
 GQ15S3006 +

**DESCRIPTION:**  
 'GLOBAL Q' EXPOSED ADJUSTABLE VERTICAL WALL TAP w/- \_\_\_ ' STANDARD SPOUT & QUARTER TURN R/A JUMPER VALVES & SINGLE PIN HANDLES. (Spout size as required)

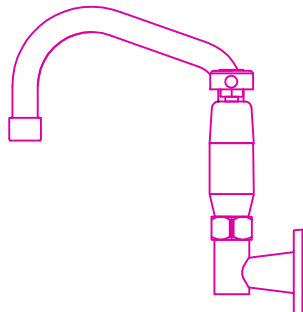
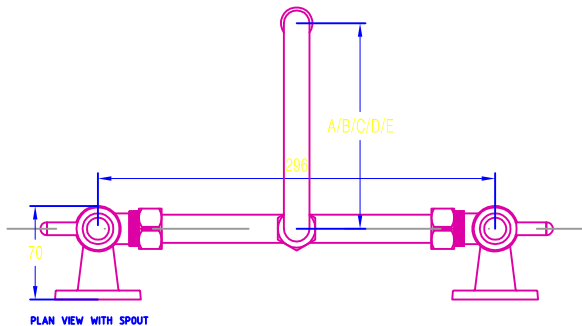
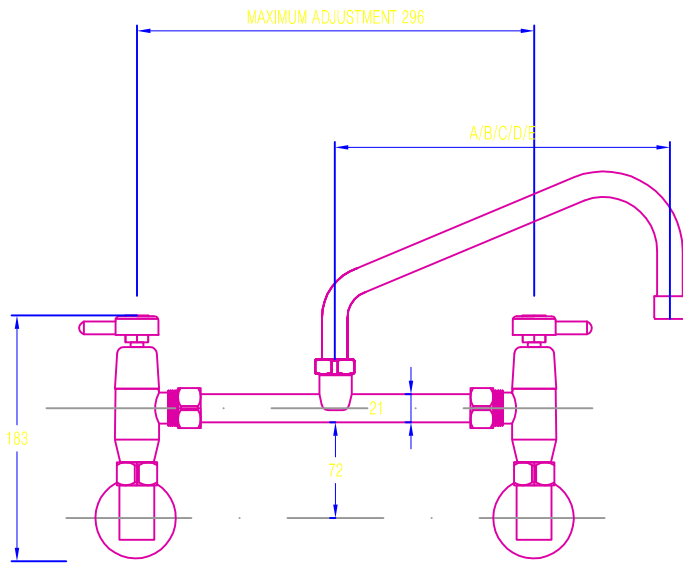
**TECHNICAL INFORMATION:**  
 - IDEAL WORKING PRESSURE 65 - 100 PSI  
 - MAXIMUM PRESSURE = 200 PSI STATIC (in short periods)  
 - WORKING TEMPERATURE 5 C - 65 C  
 - SHIPPING WEIGHT 5.0KGS (approx)  
 - SCREWED MECHANICAL JOINTS



**SUPPLIED WITH:**  
 - WALL MOUNTED ELBOWS  
 - ADJUSTABLE BREACH PIECE.  
 - STANDARD SWIVEL SPOUT - size to your choice - see chart blow to left

**FEATURES:**  
 - ALL PARTS CHROME PLATED  
 - USES "RAPID ACTION" QUARTER TURN 'HydOseal' JUMPER VALVES. (Rapid Action = a mechanical action, fast rising spindle).  
 - ADJUSTABLE BRASS & CHROME BREACH PIECE.  
 - ELBOW ARE SEPERATE FROM ACTUAL TAP BODY ALLOWING EASY ASSEMBLY.  
 - SINGLE PIN HANDLES ARE TIGHT FITTING TO SPINDLE SPLINES TO AVOID COMING LOOSE.

**WELS**  
 - 3 STAR, 9 lpm



REF	MODEL	LENGTH mm	Part Nbr.
A	6" MODEL	179mm	GQ15S3006
B	8" MODEL	227mm	GQ15S3008
C	10" MODEL	276mm	GQ15S3010
D	12" MODEL	324mm	GQ15S3012
E	14" MODEL	376mm	GQ15S3014

**WATERMARK & WELS:**

Global Tapware Pty Ltd is a Watermarked, level 1, Company. All relevant products & components are WELS registered.

**Special Notice:**

- 1 - We reserve the right to make changes to products and drawings without notice.
- 2 - All drawings & documents are subject to copyright (c).
- 3 - Seek written consent by us to reprint / use other than in specification work.

**GLOBAL Q' SERIES - 1/4 TURNS - PT No.GQ15S3006 +**  
 EXPOSED ADJ. VERTICAL WALL TAP + STANDARD SWIVEL SPOUT