



PRODUCT NAME:
GLOBAL STAINLESS SERIES
EXPOSED ADJ. BREACH HOB TAP 3/8" OUTLET



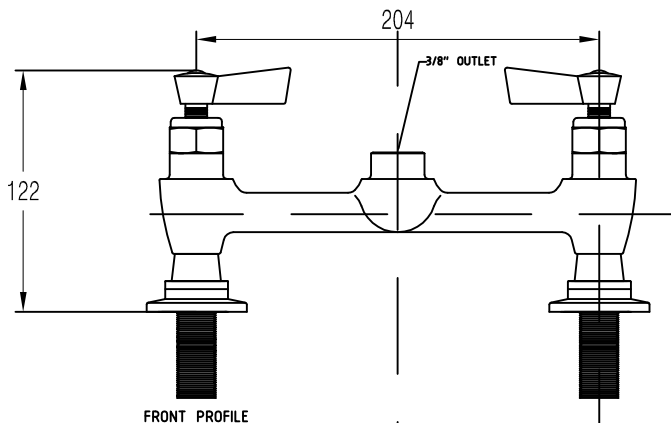
PART NUMBER:
GS04

DESCRIPTION:
S/S EXPOSED FIXED BREACH HOB TAP BODY
c/w 3/8" OUTLET
WITH 360 DEGREE SWIVEL CHECK STEMS
JUMPER VALVES.

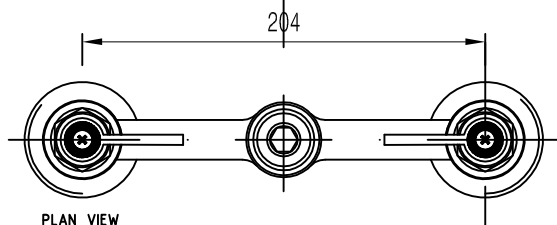
TECHNICAL INFORMATION:
- IDEAL WORKING PRESSURE = 65 - 100 PSI
- MAXIMUM PRESSURE = 200 PSI STATIC (in short periods)
- MIN. EFFECTIVE PRESSURE = 45 PSI
- WORKING TEMPERATURE 5 C - 65 C
- SHIPPING WEIGHT - 1.2 KG

SUPPLIED WITH:
- S/S 360 DEGREE SWIVEL CHECK STEMS JUMPER VALVES

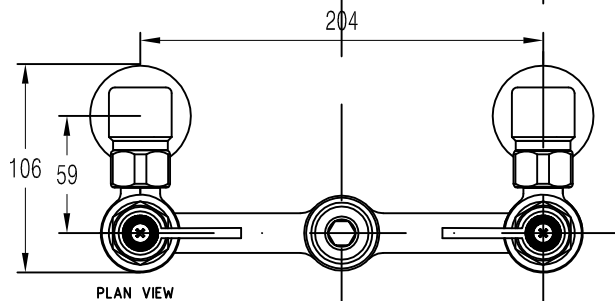
FEATURES:
TAP BODY:
- S/S (304) DUAL HOB TAP BODY
- S/S INTERNAL WORKINGS
- 360 DEGREE SWIVEL CHECK STEMS JUMPER VALVES.
- CP. LEVER HANDLES (SMALL FLAT EDGED SHAPE)
- 90 degree MOUNTING ADAPTORS



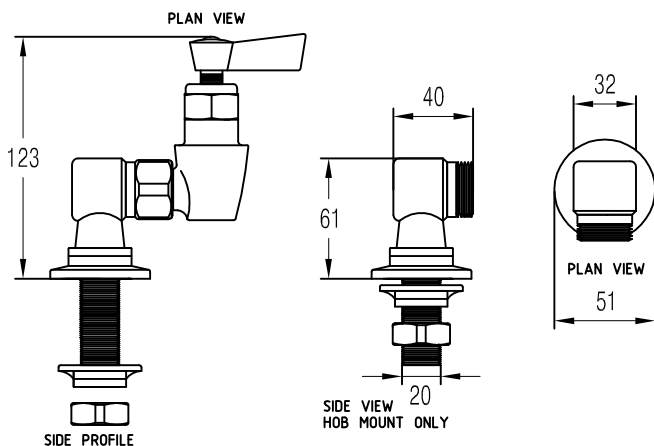
FRONT PROFILE



PLAN VIEW



PLAN VIEW



SIDE PROFILE

SIDE VIEW
HOB MOUNT ONLY

WATERMARK & WELS:

Global Tapware Pty Ltd is a Watermarked, level 1, Company.
All relevant products & components are WELS registered.

Special Notice:

- 1 - We reserve the right to make changes to products and drawings without notice.
- 2 - All drawings & Documents are subject to copyright ©.
- 3 - Seek written consent by us to reprint / use for other than specification work.

GLOBAL STAINLESS SERIES PT. NO. GS04
S/S EXPOSED ADJ.BREACH HOB TAP WITH 3/8" OUTLET