



PRODUCT NAME:
GLOBAL STAINLESS SERIES
S/S EXPOSED BREACH ADJUST. WALL TAP
with SWIVEL OUTLET



PART NUMBER:
GS15S

DESCRIPTION:
S/S EXPOSED ADJUSTABLE WALL TAP BODY
WITH S/S SWIVEL OUTLET
WITH 360 DEGREE SWIVEL CHECK STEMS
JUMPER VALVES.



TECHNICAL INFORMATION:

- IDEAL WORKING PRESSURE:- 65 - 100 PSI
- REC. MIN. OPERATING PRESSURE :- 45 PSI
- MAXIMUM PRESSURE = 200 PSI STATIC (in short periods)
- WORKING TEMPERATURE 5 C - 65 C

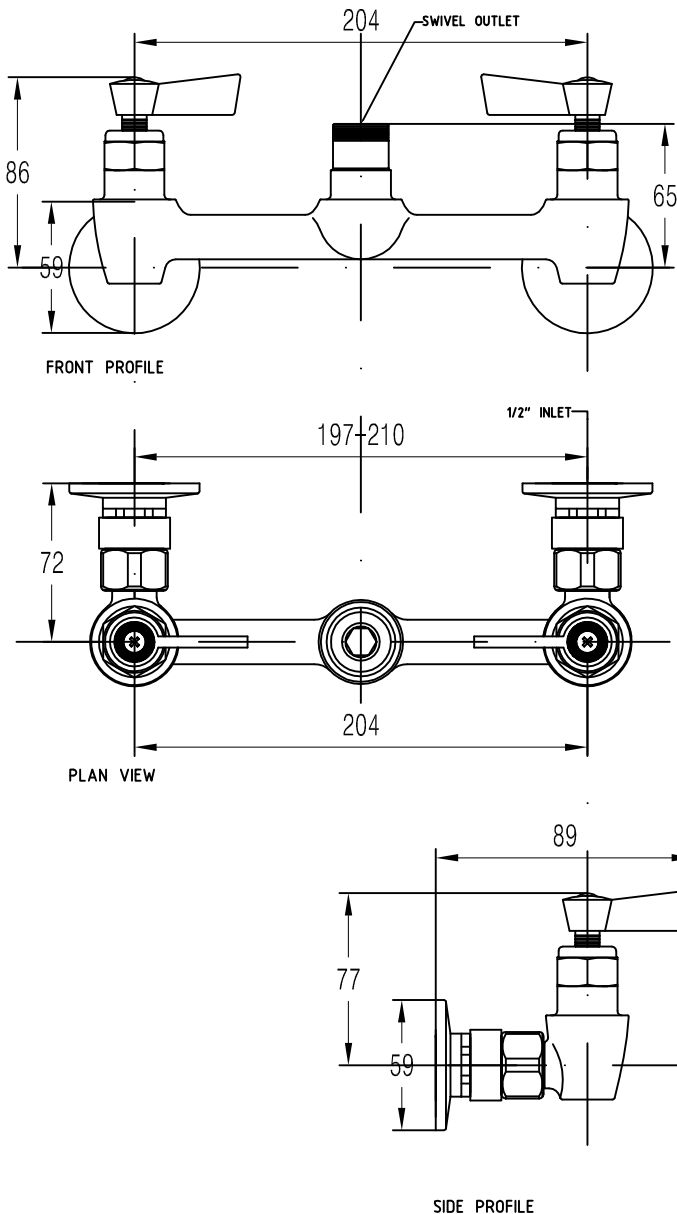
SUPPLIED WITH:

- S/S 360 DEGREE SWIVEL CHECK STEMS JUMPER VALVES
- S/S ADJUSTABLE WALL MOUNTS
- CP ADJUSTABLE SCREWED WALL FLANGE

FEATURES:

TAP BODY:

- S/S BODY
- S/S INTERNAL WORKINGS
- S/S LEVER HANDLES (SMALL FLAT EDGE SHAPE)
- ADJUSTABLE UP TO 13MM
- 1/2" FEMALE INLET ADJUSTABLE WALL MOUNT
- SWIVEL OUTLET



WATERMARK & WELS:

Global Tapware Pty Ltd is a Watermarked, level 1, Company.
All relevant products & components are WELS registered.

Special Notice:

- 1 - We reserve the right to make changes to products and drawings without notice.
- 2 - All drawings & Documents are subject to copyright ©.
- 3 - Seek written consent by us to reprint / use for other than specification work

GLOBAL STAINLESS SERIES PT. NO. GS15S
S/S EXPOSED BREACH ADJUSTABLE WALL TAP
with SWIVEL OUTLET