



PRODUCT NAME:
'GLOBAL EC' SERIES

WALL STOPS with SWIVEL SPOUTS.

WALL STOPS + R/A $\frac{3}{8}$ " & SWIVEL OUTLETS

Australian Designed
& Made

PART NUMBERS:

(a) GEC13S3006 + (b) GEC13S (c) GEC13

DESCRIPTION: EASY CLEAN WALL STOPS w/-
"Doust" JUMPER VALVE & / or

- STDD SWIVEL SPOUT - (a)"GEC13S3006 +"
- SWIVEL ELBOW OUTLET - (b)"GEC13S"
- $\frac{3}{8}$ " ELBOW OUTLET - (c)"GEC13"

TECHNICAL INFORMATION:

- IDEAL WORKING PRESSURE 65 - 100 PSI
- MAXIMUM PRESSURE = 200 PSI STATIC (in short periods)
- WORKING TEMPERATURE 5 C - 65 C
- SHIPPING WEIGHT 5.0KGS (approx)
- SCREWED MECHANICAL JOINTS

SUPPLIED WITH:

GEC12:-

- EASY CLEAN WALL STOPS ONLY (1 x pair)
- or

GEC13:-

- Right Angle WALL OUTLET - $\frac{1}{2}$ " inlet x $\frac{3}{8}$ " outlet
- or

GEC13S:-

- Right Angle WALL OUTLET - $\frac{1}{2}$ " inlet x swivel outlet
- or

GEC13S3006 + (see chart) :-

- Right Angle WALL OUTLET - $\frac{1}{2}$ " inlet x standard spout

FEATURES:

TAP BODY:

- WALL STOPS come with very reliable Australian made "Doust" jumper valves.
- Uses EASY CLEAN HANDLES

WELS (with spout only)

- 3 STARS 9 L/min

WATERMARK & WELS:

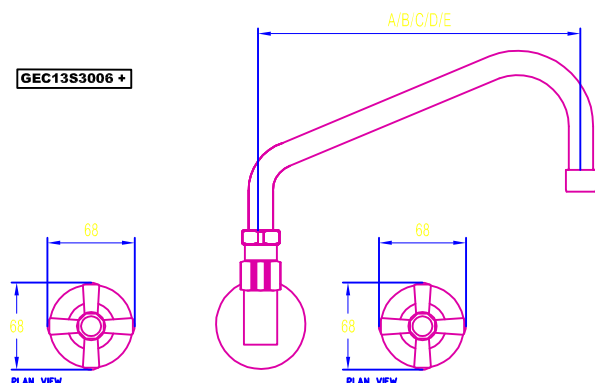
Global Tapware Pty Ltd is a Watermarked, level 1, Company.
All relevant products & components are WELS registered.

Special Notice:

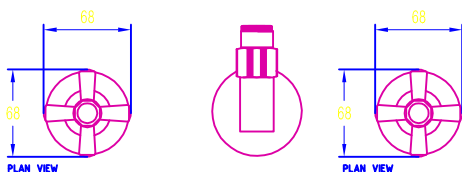
- 1 - We reserve the right to make changes to products and drawings without notice.
- 2 - All drawings & documents are subject to copyright (c).
- 3 - Seek written consent by us to reprint / use other than in specification work.

'GLOBAL EC' SERIES PT No. GEC13S3006+ / GEC13 / GEC13S
WALL STOPS + STDD SPOUT or $\frac{3}{8}$ " or swivel outlets

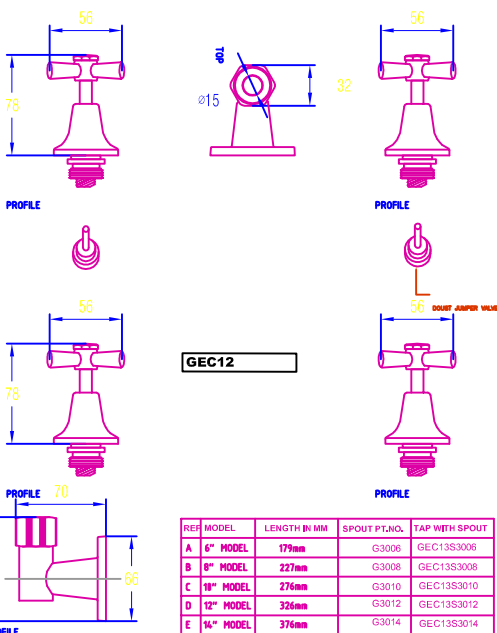
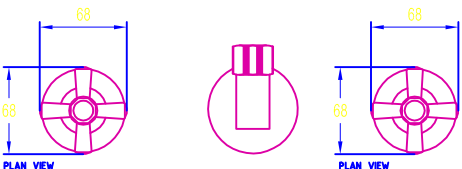
GEC13S3006 +



GEC13S



GEC13



GEC12

REF	MODEL	LENGTH IN MM	SPOUT PT.NO.	TAP WITH SPOUT
A	6" MODEL	179mm	G3006	GEC13S3006
B	8" MODEL	227mm	G3008	GEC13S3008
C	10" MODEL	276mm	G3010	GEC13S3010
D	12" MODEL	326mm	G3012	GEC13S3012
E	14" MODEL	376mm	G3014	GEC13S3014