

**PRODUCT NAME:**

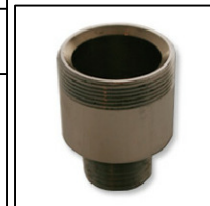
'GLOBAL EC' & 'Q' SERIES
SWIVEL SPOUT to TAP ADAPTOR - CP

PART NUMBER:

G563826

DESCRIPTION:

SWIVEL SPOUT to TAP ADAPTOR -CP
3/8" x 26 tpi

**TECHNICAL INFORMATION:**

- IDEAL WORKING PRESSURE 65 - 100 PSI
- MAXIMUM PRESSURE =
- WORKING TEMPERATURE
- SHIPPING WEIGHT _____ (approx)
- THREADED MECHANICAL JOINTS

SUPPLIED WITH:**FEATURES:**

- THESE ADAPTORS SCREW INTO THE TAP BODY THAT HAS A 3/8" FEMALE OUTLET. THIS ALLOWS A SWIVEL SPOUT TO BE FITTED TO A TAP BODY

TECHNICAL INFORMATION:

- IS MADE FROM BRASS AND THEN CHROME PLATED FOR USE WITH CP TAP BODIES -e.g. 'GLOBAL EC' & 'Q' Series.

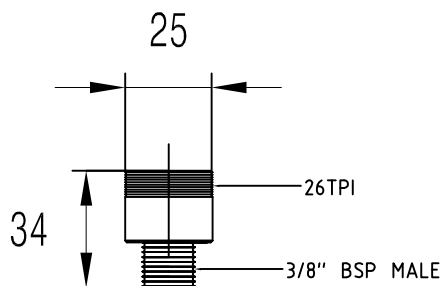
WELS**WATERMARK & WELS:**

Global Tapware Pty Ltd is a Watermarked, level 1, Company.
All relevant products & components are WELS registered.

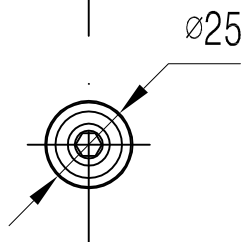
Special Notice:

- 1 - We reserve the right to make changes to products and drawings without notice.
- 2 - All drawings & Documents are subject to copyright ©.
- 3 - Seek written consent by us to reprint / use for other than specification work.

'GLOBAL EC' & 'Q' SERIES PT NO. - G563826
SWIVEL SPOUT to TAP ADAPTOR - CP



PROFILE



TOP

FITS TAP BODIES WITH 3/8" OUTLET
TO TAKE SWIVEL SPOUTS