

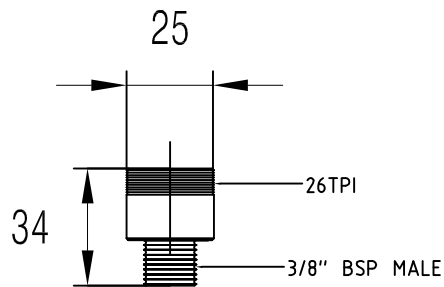


PRODUCT NAME:
'GLOBAL STAINLESS' SERIES
S/S SWIVEL SPOUT to TAP ADAPTOR - $\frac{3}{8}$ " x 26tpi

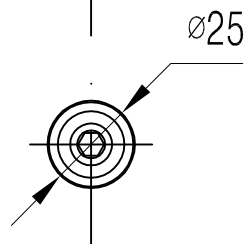
PART NUMBER:
GS563826

DESCRIPTION:
SWIVEL SPOUT to TAP ADAPTOR - S/S
- $\frac{3}{8}$ " X 26tpi

TECHNICAL INFORMATION:
- IDEAL WORKING PRESSURE 65 - 100 PSI
- MAXIMUM PRESSURE =
- WORKING TEMPERATURE
- SHIPPING WEIGHT _____ (approx)
- THREADED MECHANICAL JOINTS



PROFILE



TOP

FITS TAP BODIES WITH $\frac{3}{8}$ " OUTLET
TO TAKE SWIVEL SPOUTS

SUPPLIED WITH:

FEATURES:

- THESE ADAPTORS SCREW INTO THE TAP BODY THAT HAS A $\frac{3}{8}$ " FEMALE OUTLET. THIS ALLOWS A SWIVEL SPOUT TO BE FITTED TO A TAP BODY

TECHNICAL INFORMATION:

- MADE FROM STAINLESS STEEL (304) FOR USE WITH OUR S/S TAP BODIES -e.g. 'GLOBAL STAINLESS' Series -

WELS

WATERMARK & WELS:

Global Tapware Pty Ltd is a Watermarked, level 1, Company.
All relevant products & components are WELS registered.

Special Notice:

- 1 - We reserve the right to make changes to products and drawings without notice.
- 2 - All drawings & Documents are subject to copyright ©.
- 3 - Seek written consent by us to reprint / use for other than specification work.

'GLOBAL STAINLESS' SERIES PT NO. - GS563826
S/S SWIVEL SPOUT to TAP ADAPTOR - $\frac{3}{8}$ " x 26 tpi