



**PRODUCT NAME:**  
**GLOBAL STAINLESS SERIES**  
S/S ADJUSTABLE EXPOSED BREACH WALL TAP  
with 3/8" F.I. OUTLET



**PART NUMBER:**  
GS15

**DESCRIPTION:**  
S/S EXPOSED ADJUSTABLE WALL TAP BODY  
with 3/8" OUTLET  
WITH 360 DEGREE SWIVEL CHECK STEMS  
JUMPER VALVES.

**TECHNICAL INFORMATION:**

- IDEAL WORKING PRESSURE:- 65 - 100 PSI
- REC. MIN. OPERATING PRESSURE :- 45 PSI
- MAXIMUM PRESSURE = 200 PSI STATIC (in short periods)
- WORKING TEMPERATURE 5 C - 65 C

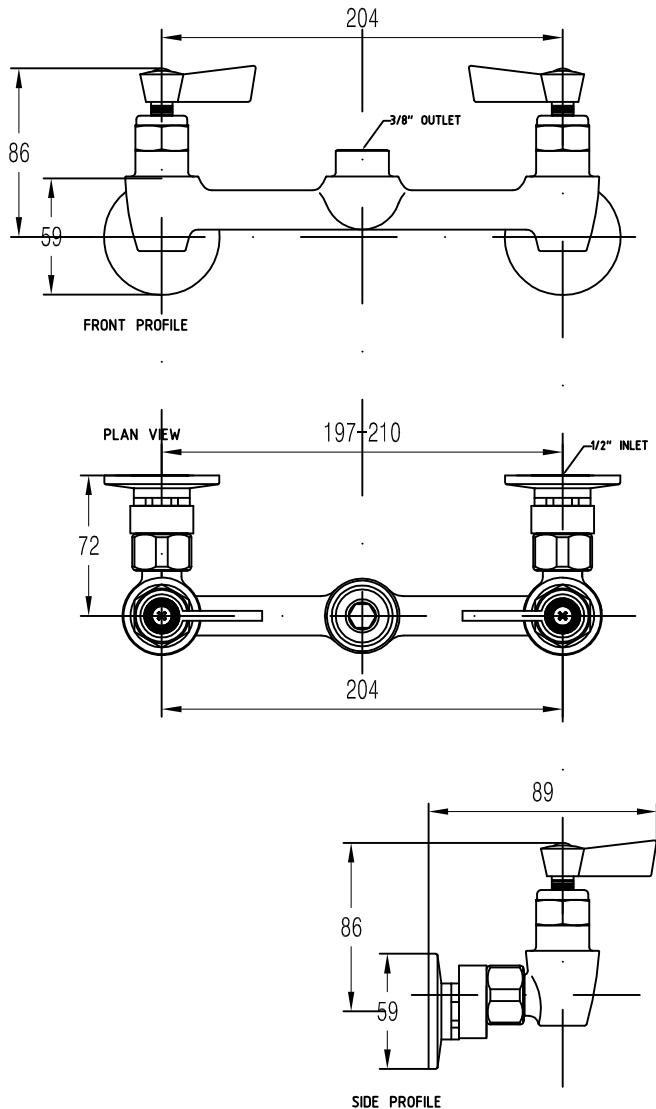
**SUPPLIED WITH:**

- S/S 360 DEGREE SWIVEL CHECK STEMS JUMPER VALVES

**FEATURES:**

**TAP BODY:**

- S/S BODY
- S/S INTERNAL WORKINGS
- CP LEVER HANDLES (SMALL FLAT EDGE SHAPE)
- ADJUSTABLE UP TO 13MM



**WATERMARK & WELS:**

Global Tapware Pty Ltd is a Watermarked, level 1, Company.  
All relevant products & components are WELS registered.

**Special Notice:**

- 1 - We reserve the right to make changes to products and drawings without notice.
- 2 - All drawings & Documents are subject to copyright ©.
- 3 - Seek written consent by us to reprint / use for other than specification work

**GLOBAL STAINLESS SERIES PT. No. GS15**  
S/S EXPOSED ADJ. BREACH WALL TAP - 3/8" OUTLET