



PRODUCT NAME:
GLOBAL SWIVEL & FIXED
GOOSENECK SPOUTS

PART NUMBER:
GS3106 & GS3112

DESCRIPTION:
- S/S GOOSE NECK SWIVEL & FIXED SPOUTS

TECHNICAL INFORMATION:
- IDEAL WORKING PRESSURE 65 PSI
- MAXIMUM PRESSURE = 200 PSI STATIC
(in short periods)
- WORKING TEMPERATURE 5 C - 65 C

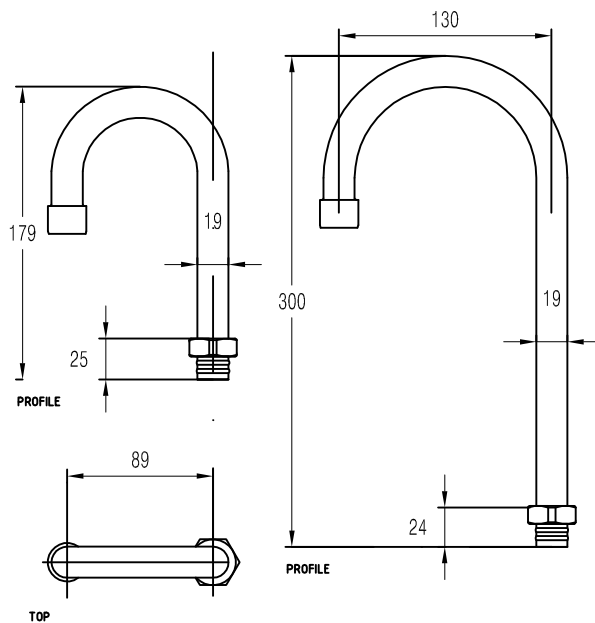


SUPPLIED WITH:
- LOOSE NUT
- O' RING x 2
- PLASTIC SPLIT RING
- S/S SERRATED WASHER IS USED UNDER THE BASE OF
SWIVEL SPOUTS TO LOCK / COVERT INTO A FIXED / RIGID SPOUT

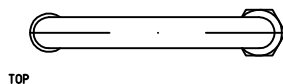
TECHNICAL INFORMATION:
- CP GOOSENECK TUBE
- FLOW CONTROLLED AERATOR

WELS
3 STAR 9 LPM

SPOUT LENGTH	PT. NO.
6"	GS3106
12"	GS3112



SERRATED WASHER
TO BE USED TO MAKE
SPOUT RIGID IN POSITION.



WATERMARK & WELS:

Global Tapware Pty Ltd is a Watermarked, level 1, Company.
All relevant products & components are WELS registered.

Special Notice:

- 1 - We reserve the right to make changes to products and drawings without notice.
- 2 - All drawings & Documents are subject to copyright ©.
- 3 - Seek written consent by us to reprint / use for other than specification work

GLOBAL SPOUTS PT. No. GS3106 & GS3112
S/S SWIVEL & FIXED GOOSENECK SPOUTS