



GLOBAL
TAPWARE



Australian Made
Products

GLOBAL Fisher Pre-Rinses

"This **booklet** to **remain** with product for the **End User** refence. **DO NOT** remove or throw away."

INSTALLATION INSTRUCTIONS

"It is important that you read this book before Installation. Please do not assume you know, as we may have made changes"

Product Part No. : _____ page _____

(Installation Details inside. Read instructions relevant for this product)

WARRANTY

This Product has a 36month warranty period from the install date.

T&C on our Website.

INSTALLER

Installation date: ___/___/___ Installing Plumbing Company _____

Contact us immediately if you have any problems or are unsure about something

While installing.

P: 1300 85 25 15

P: 07 3855 2350

E: sales.info@globaltapware.com

Product Features & / or Changes:

- 1 – Since early 2020 we started to work towards standardizing all Global Fisher Pre-Rinses to being made from ALL STAINLESS components rather than a mix of Stainless & Chrome brass parts. This came about from making an all-Stainless-Steel units for RO (Reverse Osmosis) applications only.
- 2 – **RO products** are indicated with a suffix '**-SS**' at the end of the standard code. We add a Special S/S Shower Spray tip. This has a soft spray with very minimal Aerosol Spray occurring. We are also about to include a special S/S “Knuckle” Joint to the Wall Brackets to allow fastening to the Back Splash of Height Adjustable Sinks.
- 3 – Late last year we introduced the 'Triple Interchangeable Spray Tips'. These were brought about by end users enquiring about having / using different sprays for different applications. Along with these tips we developed a wall mounted Bracket to hold the spare tips & the Tool. This is supplied as an extra and is sold separately. – See data sheet on this near the end of this book.
- 4 – We also developed a special Aerator Spray Head for our S/S Spray Gun for Jug & Glass Filling or Pots / kettles.
- 5 – Another development we have been working on since early 2020 is the Pre-Rinse Hose. After extensive testing along with Lab Testing to meet AS4020 & AS3499 we have now got these hoses Watermarked.

The hose has a S/S braided Inner Santoprene Tube with a very strong S/S outer Armourflex with ½” Swivel Female ends.

- 6 – Other changes are on the base of S/S Dual Hob tap. We now make the tap with a bottom recess that contains a Rubber Impregnated Fibre Washer mat. This Fibre Mat and along with our new S/S “Fix-A-Plate” that is mounted under the sink we have found the two combined to produces a very good seal between the tap base & the sink top.

We still recommend applying Silicone to help seal the tap in position. We even have 2 cut-out slots in the mat to give the silicone a housing.

- 7 – The 3mm S/S Plate called a “Fix-A-Plate” is sold separately on Packs of 6 - **Pt. No. GA-FP-6S**.

We also make an extra long one for where the timber under the sink is badly damaged.

- 8 – We make the **Global Fisher** pre-rinses here in Australia at our Brisbane factory. We use a mix of imported components along with Australian Made components and they all come together in our factory. We Assemble & Pressure test all the Pre-Rinse Sub-Assemblies (the components above the tap) to make sure no leaks occur. We do spot pressure checks on the S/S taps bodies – especially the main movers - the Dual Hob Tap bodies.

The one thing we DO NOT do is import a fully made pre-rinse from Asia, unlike a number of our competitors.

We supply all components either by themselves or as Service Kits

See back cover :- Order from any plumbing store through-out Australia

GLOBAL Fisher - HOB / DECK Mount

Mr. Plumber,

This 'Global Fisher' Pre-Rinse product has been Glued, Pre-assembled & Tested in our Factory for leaks – You have this product as no issues were detected. We use Red Loctite 277 or 263 on all Mechanical Joints.

To install is now only a 4-stage easy fit-off.

- 1 - **Fit the Tap Body / Outlet to the Hob / Sink.** *The tap is fitted with our new 'DROP 'N LOCK' System.*
- 2 – **'Drop-in' the Sub-Assembly.** But first grease O'Rings. Hand tighten nut then give a light nip up. Same for spout if that applies.
- 3 – **Slide Hose through Spring Guard,** then Fit Hook over Spring Retainer & Screw on Hose & Spring Guard –Then fit Spray Gun. -- use Fibre washers provided -- Make sure gun rotates freely.
- 4 – **Fit Wall Bracket to suit.** – MOUNT as High up the Riser towards the spring as possible.

IMPORTANT – Always leave the Riser in the Sitting position as it is installed in. DO NOT Push Riser / Tap back towards the wall. Measure twice, cut Rod ONCE. If you botch it, there is a spare Rod supplied.

- 5 – **Before Carrying out water pressure test.** - Remove Spray Valve & Aerator first so no rubbish gets caught. Check that all is working ok. Refit Aerator & Gun.
- 6 – The standard Spray Gun comes with 3 interchangeable Spray Tips. It is supplied with the Flat Fan Spray as per our WELS registration. You can change the tip to suit various applications / end user requirement. LEAVE other tips with End User.

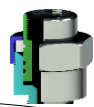
NOTE: RO units have an Optional special Soft Shower Spray Aerator inside a separate packet,
If unsure to use it, then leave with Spray Gun or refit It to the gun, leaving replaced parts in package

Spray Tips –

Flat Fan (WELS) , Shower, Jet



The new
"Drop 'N Lock"
System



Below is for RO applications





GLOBAL Fisher - HOB / DECK Mount

DO NOT INSTALL SPRINGS Other WAY AROUND – only as shown.

VOIDS Warranty if installed wrong.



Tall = GF022100
Midi = GF022100-M
Café = GF022100-C
RO use = GF022100-SS

GF032100
GF032100-M
GF032100-C
GF032100-SS

GF022512
GF022512-M
GF022512-C
GF022512-SS

GF032512
GF032512-M
GF032512-C
GF032512-SS

NOTE - other Spout sizes available



Tall = GF042100
Midi = GF042100-M
Café = GF042100-C
RO user = GF042100-SS

GF062100
GF062100-M
GF062100-C
GF062100-SS

GF042512
GF042512-M
GF042512-C
GF042512-SS

GF062512
GF062512-M
GF062512-C
GF062512-SS

NOTE - other Spout sizes available

GLOBAL Fisher - WALL Mount

Mr. Plumber,

This 'Global Fisher' Pre-Rinse product has been Glued, Pre-Assembled & Tested in our Factory for leaks – You have this product as no issues were detected. We use Red Loctite 277 or 263 on all Mechanical Joints.

To install is now only a 4-stage easy fit-off.

- 1 - **Fit the Tap Body / Outlet to the Wall or Splashback.** *The tap is fitted with our new 'DROP 'N LOCK' System.*
- 2 – **"Drop in" Sub-Assembly.** But first grease O'Rings. Hand tighten nut then give a light nip up. Same for spout if that applies.
- 3 – **Slide Hose through Spring Guard, then Fit Hook over Spring Retainer & Screw on Hose & Spring Guard** –Then fit Spray Gun. -- use Fibre washers provided -- Make sure gun rotates freely.
- 4 – **Fit Wall Bracket to suit.** – MOUNT as High up as possible. Get as close to Spring as possible.

IMPORTANT – Always leave the Riser in the Sitting position as it is installed in. DO NOT Push Riser / Tap back towards the wall. Measure twice, cut Rod ONCE. If you botch it, there is a spare Rod supplied.

- 5 – Before **Carrying out water pressure test.** - Remove Spray Valve & Aerator first so no rubbish gets caught. Check that all is working ok. Refit Aerator & Gun
- 6 – The standard Spray Gun comes with 3 interchangeable Spray Tips. It is supplied with the Flat Fan Spray as per our WELS registration. You can change the tip to suit various applications / end user requirement. **LEAVE other tips with End User.**

NOTE: RO units have an Optional special Soft Shower Spray Aerator inside a separate packet,
If unsure to use it, then leave with Spray Gun or refit It to the gun, leaving replaced parts in package

DO NOT INSTALL SPRINGS Other WAY AROUND – only as shown.

VOIDS Warranty if installed wrong.



Tall	= GF112100	GF152100	GF162100	GF112512	GF152512	GF162512
Midi	= GF112100-M	GF152100-M	GF162100-M	GF112512-M	GF152512-M	GF162512-M
Café	= GF112100-C	GF152100-C	GF162100-C	GF112512-C	GF152512-C	GF162512-C
RO use	= GF112100-SS	GF152100-SS	GF162100-SS	GF112100-SS	GF152512-SS	GF162512-SS

COMING SOON

Our latest

WALL BRACKET

- Arriving early 2023 -



INTRODUCING :

The "KNUCKLE"



- Sold Separately except RO Pre-Rinses

So You can do this :-



Changing of Standard Spray Tips .

Using a Shifter or our tool Remove the existing Tip. Hand screw on the new spray tip / head you want to use and give it a slight nip up with shifter.



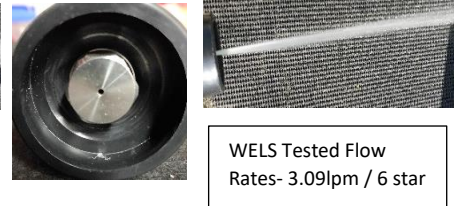
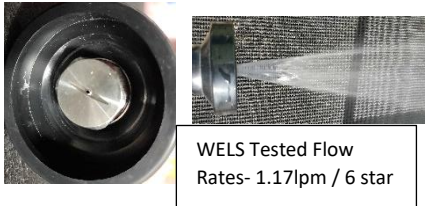
This wall Holder & tool available -Pt. No. **GTSH-T**



1 - Flat Fan Spray (***fitted to Gun***)

2 - Shower Spray

3 - Straight Pulse Jet Spray

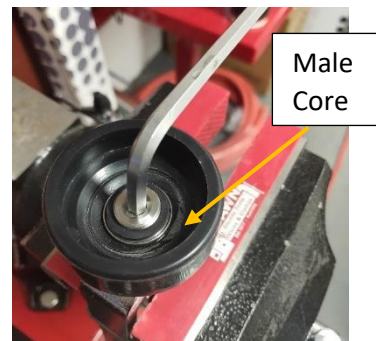


Step 1 – Remove the existing Spray tip.

To Install this tip,

First of remove Hex Tip.

Using a 6mm Allen Key to remove Male Core.



Step 2 – Clean inside gun. Then use a liquid type thread sealant – e.g. -'Loctite / Locseal / plumbers goo. Use a Socket & / or Shifter to Fit new 'Male Spray Tip'.

IMPORTANT – Fit **Bumper** back on the gun first before fitting male core.

Clean Inside of thread



GLOBAL FISHER PRE-RINSES					
Item	Part No.	Description	Pot Filler	Standard	RRP \$
S/S SPARE PARTS for HOB & WALL					
1	G8101	S/S Spring Guard – Standard Tall	√	√	
2	G8101C	S/S Spring Guard – Café -Short	√	√	
3	GPRH0650S	S/S Armourflex PR Hose -650mm Cafe	√	√	
4	GPRH0900S	S/S Armourflex PR Hose -920mm	√	√	
5	GPRH0970S	S/S Armourflex PR Hose -970mm	√	n/a	
6	G5208	S/S Handle for Spray Gun- [S/S & Plastic]	√	√	
7	G2949-B	S/S Spray Valve	√	√	
7A	GF2949HDL12M	S/S Spray Gun Complete -1/2" male inlet	√	√	
8	G50TS-M-KIT	S/S Triple Spray Tip Kit, incl. Male	√	√	
9	GTSH-T	S/S Triple Spray Tip Wall Holder & Tool	√	√	
10	G50ST	S/S Flat Fan Spray Nozzle-1/4"M + Washer	√	√	
11	G50AH-KIT	S/S RO Water Shower Spray Tip set, incl Male	√	√	
12	G50BM-BK	Bumper – Black	√	√	
13	G50BM-BLU	Bumper - Blue	√	√	
14	G8208SS	S/S Hook – 8" - CP	√	√	
15	GSR143812	S/S Spring Retainer - S/S	√	√	
16	GF8310	Wall Bracket- Adj.- Clamp, Flange & 280mm Rod	√	√	
17	GF8016	S/S Riser 16" - S/S - 3/8"	n/a	√	
18	GF8010	S/S Riser 10" - S/S - 3/8"	√	n/a	
19	GF8004	S/S Riser 4" - S/S - 3/8"	√	n/a	
20	G-512	S/S Pot Filler + 12"Spout - sizes- 6, 8, 10, 12, 14"	√	n/a	
21	GS03MK	S/S Tap Mounting Kit	√	√	
22	GS03IH	S/S Inlet Hoses - Pair	√	√	
23	G50KIT	S/S Spray Valve Repair Kit	√	√	
24	G25RK-SS	S/S Pot Filler Repair Kit only	√	n/a	
25	GS03RKC-SS	S/S Repair Kit – Cold Side only	√	√	
26	GS03RKH-SS	S/S Repair Kit – Hot Side only	√	√	
S/S TAP BODIES – HOB & WALL					
27	GS02S	Hob / Deck – Single – non mixing	√	√	
28	GS03S	Hob / Deck – Single Hole Dual Mixing	√	√	
29	GS04S	Hob / Deck – Exposed Breach-fixed - Mixing	√	√	
30	GS06S	Hob / Deck – Outlet only – No tap	√	√	
31	GS07S	Hob / Deck – Hidden Breach - Mixing	√	√	
32	GS11S	Wall / Splash Back – Single -Non-Mixing	√	√	
33	GS15S	Wall / Splash Back - Exposed Breach- Adj. Mixing	√	√	
34	GS16S	Wall / Splash Back – Outlet Only - no tap	√	√	