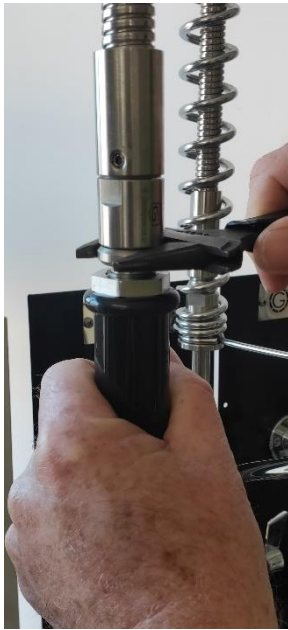
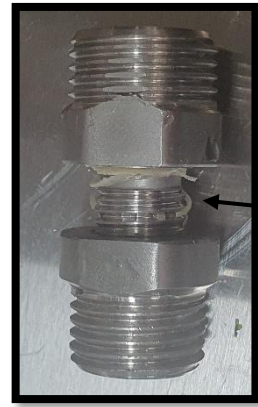


Changing the SWIVEL Spray Gun Adaptor is as Easy as 1,2,3

Step 1 - Remove the Handle from the Faulty Swivel Adaptor.



Use Shifter to hold nipple / adaptor.
Twist Handle. ...
If it won't move use another Shifter on the Hex part of the Handle itself.



Glue has failed

Take care not to lose any Rubber Washers inside Handle !!

Step 2 - Remove the Adaptor from the Hose.



Take care not to lose any Fibre Washers inside Hose.
The Fibre Washer must be used on the hose only.

Step 3 – To Refit just do it all in Reverse order.

Changing the Spray Gun Handle:- Easy as 1,2,3

Step 1 - Remove the Valve from the Existing Set Up.



Split / Broken Handle

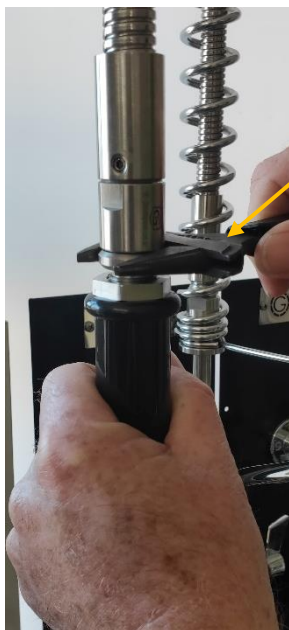


Take

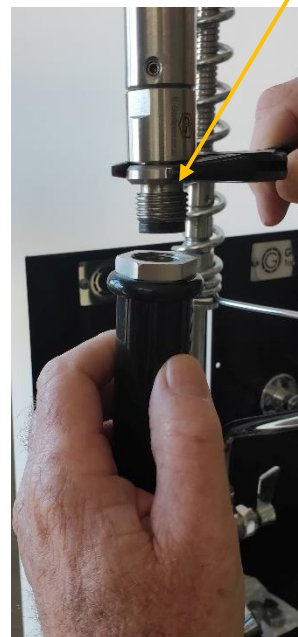
care not

to lose any Rubber Washers!!

Step 2 - Remove the Existing Handle from the Hose.



Use Shifter to hold nipple / adaptor.
Twist Handle. ...
If it won't move use another Shifter on the Hex part of the Handle itself.



Step 3 – Refit New Handle in reverse order.



Note – New Handles have Smooth Round fitting at the Spray Valve end & Hex at Hose end.

This Handle has the Fixes incorporated within it to stop the Plastic from Cracking.