

How To Fix Leaking Pre-Rinse Spray Gun

by Global Tapware P/L

Step 1:-

Turn Water off at the tap.

Then remove Valve Head from Handle.



Step 2:-

Using a "Shifter" undo the Hex Nut / Internal Male



'Take Care' as this fitting is under spring pressure

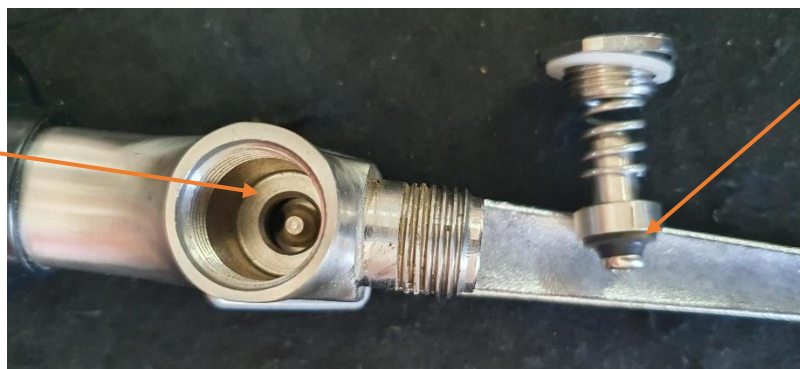


Step 3:-

Check Inside valve and around rubber seat for any debris / rubbish.

If possible, carefully give it a flush out with water under a tap. The internal seat is Stainless Steel and should not have any damage to it

Check inside for rubbish



Check around seat for rubbish

STEP 4:- Re-assemble with care in reverse order.

*** You will need to push & turn the hex at the same time to get it started.

GLOBAL TAPWARE P/L

1300 85 25 15