



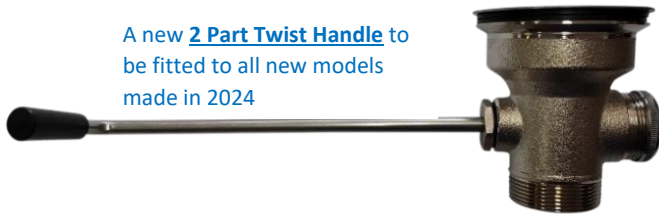
SCRAP CATCHER™ POP-UP TWIST WASTE Valves

SCRAP CATCHER™

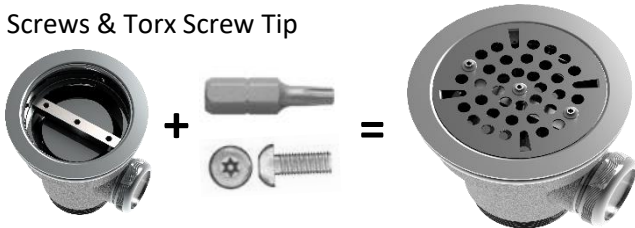
POP UP Waste Valve

For COMMERCIAL SINK INSTALLATIONS
TWIST OPEN / TWIST CLOSE

A new **2 Part Twist Handle** to be fitted to all new models made in 2024



Supplied with Standard Flat Strainer & **Anti-Tamper Bar** w- Torx Lock Screws & Torx Screw Tip

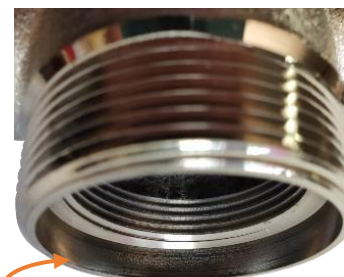


Anti-Tamper Bar is a method to lock down the strainer and to stop unwanted removal.

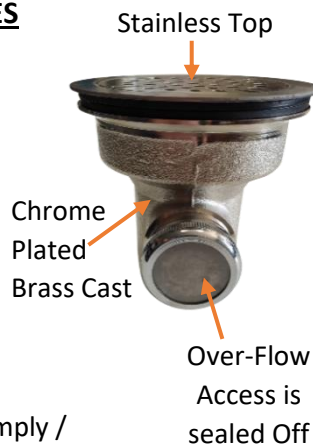
- ✓ Heavy Duty Chrome Plated Brass & S/S Screw in Top & Strainer.
- ✓ Central Pop Up Plug
- ✓ Comes with Flat Grill w- 6mm holes.
- ✓ Short Push-In Basket available
- ✓ Short Lock-In Basket available
- ✓ 2" Male Outlet. Now with Internal Rebate for Improved Seating to PVC Traps.
- ✓ Suits 90mm Sink Hole
- ✓ Allows for Over-Flow Pipe. Comes Standard with-it sealed Blank off.
- ✓ Will / Should interchange with most other brands used.
- ✓ **NEW Special INSTALLING Tool Available.**
- ✓ This tool allows a 1 Man Installation to take place. Sold with or separately.

**** 12 Month Product Material Failure Warranty. Replacement of part only, no onsite. Does not cover initial Installation issues.**

FEATURES



Suits 2" Trap w- special Recess Machined to comply / fit to Australian PVC Traps along with Brass / copper traps & 1 1/2" Internal Thread



- Pt. No. **GSC90PU** \$_____ + GST
90mm Twist Pop-Up Scrap Catcher™
- Pt. No. **GSC90PU-T** \$_____ + GST
90mm Twist Pop-Up Scrap Catcher™ + **TOOL**
- Pt. No. **GSC90PU-TOOL** \$_____ + GST
Special tool to allow for 1-man installations.

Must be installed in accordance with the requirements of AS/NZS3500

1300 85 25 15 or 07 3855 2350

sales.info@globaltapware.com

www.globaltapware.com.au



GLOBAL
TAPWARE



WMTS 040:2022
WaterMark
Certificate No: 23459
Global Tapware Pty Ltd

SCRAP CATCHER™ POP-UP TWIST WASTE Valves

SPARE PARTS & ACCESSORIES

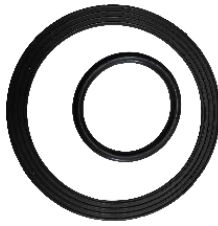
Replacement Strainer
SCTPU-P1



Replacement SS Top Screw in Flange
SCTPU-P2



Rubber Repair Kit
SCTPU-P3



Lock-In Basket

SCTPU-P4



Drop-In Basket

SCTPU-P5



Top Views

Replacement Arm Seal Nut
SCTPU-P6



Replacement Pop-Up PLUG
SCTPU-P7



Twist Arm Extensions – 100mm & 150mm
SCTPU-P8 # SCTPU-P9



Install Tool

SCTPU-P11



Extended

Tool -
Folded

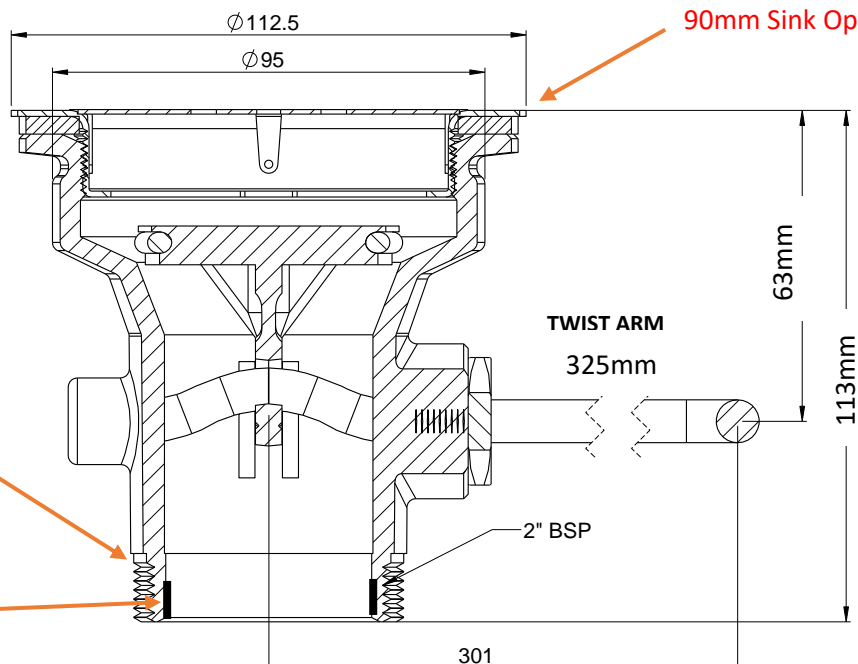
Anti-Tamper Bar + Torx Screws

SCTPU-P12



X 3

Replacement Twist Arm -2 Parts + lock in Joiner
SCTPU-P10

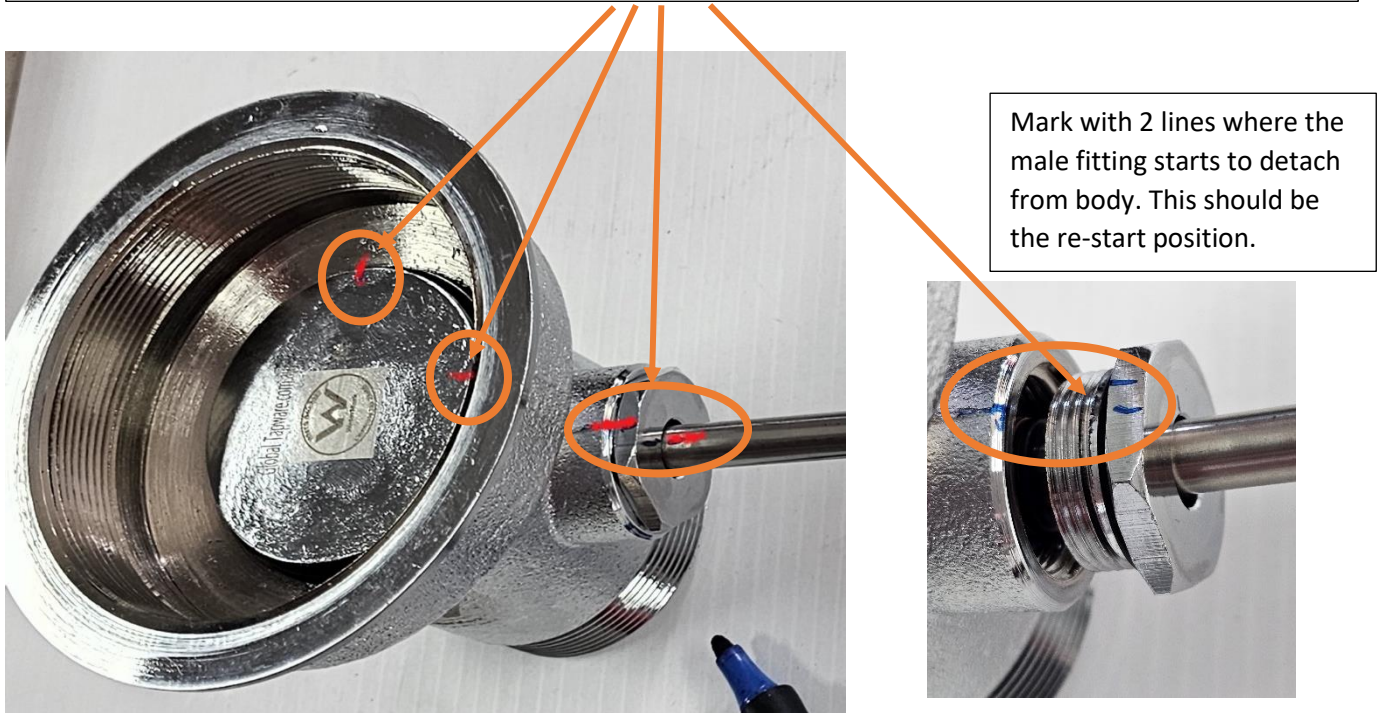


2" BSP Thread on outside. w- 8mm internal Rebate Machined Inside to allow for Plastic Waste Trap tip.

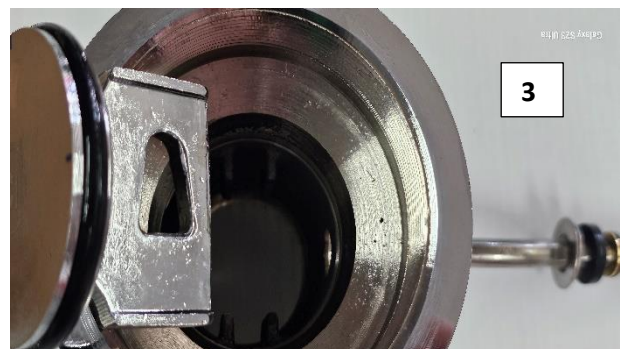
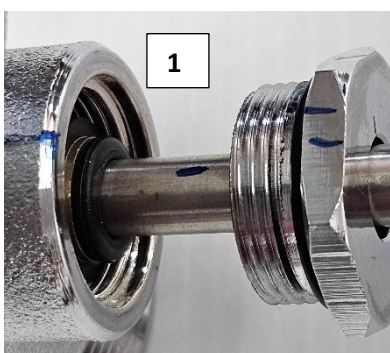
Twist Waste Valve

Installation Instructions

Step One A – This involves dis-assembling the Unit. So, to ensure it all comes back together, you need to mark up the positioning of the Lever & Plug. In below 3 photos it will show you how to mark up.



Step Two A – (1) After marking up the positions proceed to removing the Twist Lever by unscrewing the Lock In Male Nut. (2) Gentle pull lever out. (3) Then pull Plug out from inside to opening.



Step Three A – To Re-Assemble – do it all in reverse and use your Guidelines you marked at the start to assist you.

Scrap Catcher Pop-Up

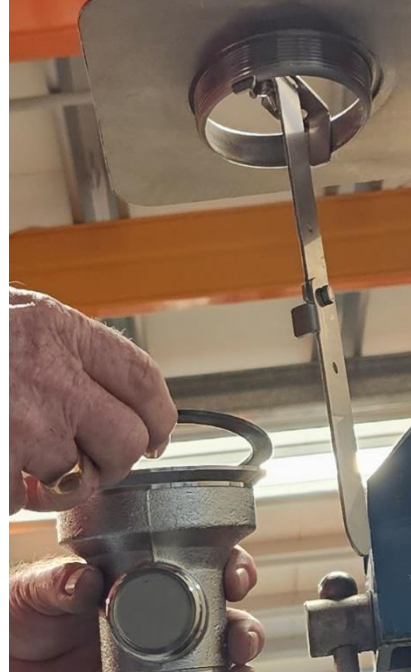
Twist Waste Valve

Using Installation Tool

Step 1 B - Insert Tool into S/S Screw-On Flange (Do Not use Silicone yet). Then position flange & tool into sink.



Step 2 B- Fit Rubber to top of Body before Screwing Cast Body onto Screw-On Flange.



Step 3 B - Slide Cast Body Over the Tool and up to flange.



Step 4 B- While Holding Tool in One Hand, screw Cast Body onto the Flange 1 or 2 turns. – THEN STOP – you need to work out how many turns left for tightening up and where you want the lever.



Step 5 B- After working out the lever position 'Back off' body and proceed to Silicone-in the Flange on the inside of Sink. Push Flange Down into Silicone bed. Then proceed to tighten up the body underneath while pulling down on the tool and making sure lever is in correct position.



Step 6 B -

Re-Assemble Lever & Plug. Refer to Step Three A on first page. Ensure Plug is moving & Sealing correctly.

Note- We welcome any feedback from these instructions if you feel they need to be changed. 1300 85 25 15